

See discussions, stats, and author profiles for this publication at: <https://www.researchgate.net/publication/258285920>

Lectotypification of *Ramonda serbica* Panc. (Gesneriaceae)

Article in *Acta Societatis Botanicorum Poloniae* · March 2011

DOI: 10.5586/asbp.2011.010

CITATION

1

READS

82

2 authors:



Zbigniew Szeląg

Pedagogical University of Cracow

68 PUBLICATIONS 680 CITATIONS

[SEE PROFILE](#)



Lajos Somlyay

Hungarian Natural History Museum

50 PUBLICATIONS 402 CITATIONS

[SEE PROFILE](#)

Some of the authors of this publication are also working on these related projects:



Atlas Florae Europaeae [View project](#)



Distribution, taxonomy, ecology and conservation of European Orchids [View project](#)

LECTOTYPIFICATION OF *RAMONDA SERBICA* PANČ. (GESNERIACEAE)ZBIGNIEW SZELĄG¹ LAJOS SOMLYAY²¹ Institute of Botany, Jagiellonian University
Kopernika 31, 31-501 Kraków, Poland
e-mail: azszelag@wp.pl² Department of Botany, Hungarian Natural History Museum
H-1476 Budapest, Pf. 222, Hungary
e-mail: somlyay@bot.nhmus.hu

(Received: March 21, 2010. Accepted: June 24, 2010)

ABSTRACT

A lectotype of the name *Ramonda serbica* Panč. is designated from Pančič's specimens held in the Hungarian Natural History Museum in Budapest (BP) and illustrated.

KEY WORDS: Balkan Peninsula, Gesneriaceae, *Ramonda*, Tertiary relic, typification.

INTRODUCTION

The European Gesneriaceae are represented by three endemic genera which are considered to be Tertiary relics (Meyer 1970). They are the two monotypic genera *Haberlea* Friv. (Frivaldszky 1835) and *Jankaia* 'Jancaea' Boiss. (Boisser 1875) which occur in the Balkan Peninsula, and *Ramonda* Rich. (Richard 1805) which comprises three species: *R. nathaliae* Panč. et Petrov. and *R. serbica* Panč., which occur in the Balkan Peninsula and *R. myconi* (L.) Rchb. which occurs in the Iberian Peninsula.

The aim of this paper is to lectotypify the name *Ramonda serbica*. It was described from Serbia (Pančič 1874) and also occurs in Albania, Bulgaria, Greece, Kosovo, Macedonia and Montenegro (Stevanović et al. 1986a, 1991; Stevanović and Bulić 1992). *Ramonda serbica* has been the subject of many studies concerning its distribution, ecology and syntaxonomy (Janković and Stevanović 1981, Stevanović and Stevanović 1985; Hill 1986; Stevanović 1986; Stevanović et al. 1986b, 1987), but has not been typified to date (cf. Strid 1991; Szelaġ and Somlyay 2009).

While studying at the herbarium of the Hungarian Natural History Museum in Budapest (BP) we unexpectedly found five sheets of *R. serbica* collected by J. Pančič in *Serbia australis*. Three sheets were labeled by J. Pančič himself, and two others were re-labeled by Archbishop L. Haynald and J. Heuffel and included in their herbaria. As the lectotype of the name *R. serbica* we have selected the oldest specimen (BP 301401) originally labeled by J. Pančič as "*Haberlea rhodopensis* Friv." under which name he placed initially the specimens from Mt. Rtanj and Mt. Pleš (Pančič 1856).

TYPIFICATION

Ramonda serbica Panč. '*Ramondia*', Flora Kneževine Srbije: 498. 1874. – Indicatio locotypica: 'na Rtanju u Aleksinačkoj, blizu Zlota u Crnorečkoj i na Plešu u Knjaževačkoj' [on Mt. Rtanj in the Aleksinac district, near Zlot in the Crna reka district and on Mt. Pleš in the Knjaževac district]. – Lectotypus (hoc loco designatus): *Ramondia serbica* Panč. [manu Janka] *Haberlea rhodopensis* Friv. In rupestr. calc. M. Rtanj S.[Serbia] a.[australis] Maj 1847 Pančič (BP 301401) [original label in Pančič's own handwriting supplemented by Janka] (Fig. 1).

Other Pančič's specimens of Ramonda serbica at BP

Ramondia serbica Panč. In rupestr. calc. M. Rtanj Serb. austr., Mai, Pančič (BP 301397 ex herb. Tauscher).

Haberlea rhodopensis Friv. Felsenspalten des M. Rtanj im Aleksinacer Kr., Jun. 847, Pančič [manu Haynald] (BP 301399 ex herb. Haynald).

Ramondia serbica nov. spec. *Haberlea rhodopensis* Panč. Ver. [Verzeichniss (Pančič 1856)] nec. Friv. In pruruptis M. Rtanj Serb. austr. substr. calc., Jun. 870, Pančič [three specimens on the lower half of the sheet BP 301396].

Ramondia Myconi Rchb. Rasen des Berges Rtanj im Alexinacer Kreis, 12.6.847, Pančič [manu Heuffel] [two specimens on the upper half of the same sheet] (BP 301396 ex herb. Heuffel et Haynald).

Ramondia serbica Panč. In rupestr. calc. M. Malinik S. austr., Apr. 869, J. Pančič (BP 301398 ex herb. Bohatsch). [Collection from Mt. Malinik situated in the Lazereva reka canyon in the vicinity of Zlot is not mentioned in the pro-

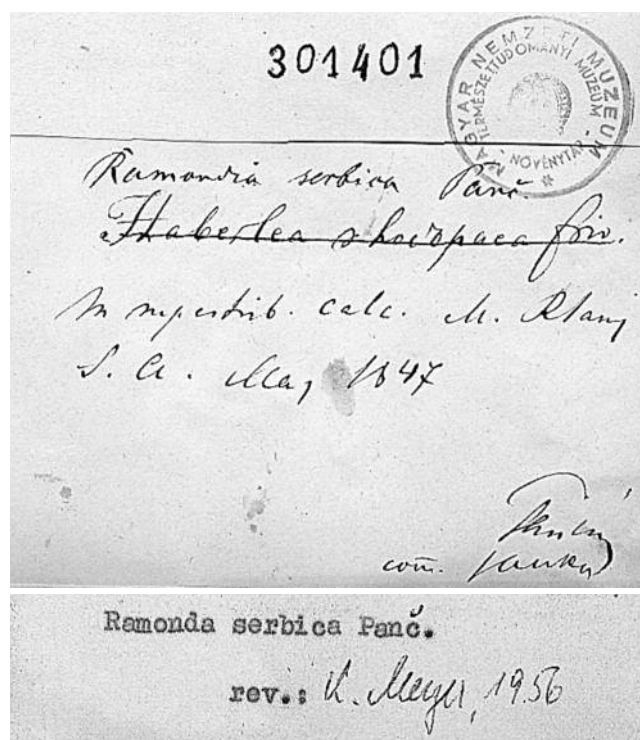


Fig. 1. Details of the lectotype of *Ramonda serbica* Panč.

tologue. According to V. Stevanović (pers. comm.) specimens of *R. serbica* collected by Pančić on Mt. Malinik in 1869 should be considered original material cited in the protologue as ‘blizu Zlota u Crmorečkoj’].

ACKNOWLEDGEMENTS

We are grateful to Dr. Tim Rich (National Museum of Wales, Cardiff) for improving the English and valuable corrections and to Prof. Vladimir Stevanović (University of Belgrade) for critical remarks. This study was supported by the Polish Ministry of Science and Higher Education, grant no. NN303089734 (to Z. Szelaĝ).

LITERATURE CITED

- BOISSIER E. 1875. *Flora orientalis sive enumeratio plantarum in oriente a Graecia et Aegypto ad Indiae fines*, vol. 4 pars 1. H. Georg, Genevae et Basileae.
- FRIVALDSZKY I. 1835. Közlések a’ Balkány’ vidékén tett természettudományi utazásról. *Magyar Tud. Társ. Évk.* 2: 235-276.
- HILL D.A. 1986. Aspects of the Yugoslavian flora: 3. The genus *Ramonda*. *Bull. Alpine Gard. Soc. Gr. Brit.* 54: 182-186.
- JANKOVIĆ M.M., STEVANOVIĆ V. 1981. Prilog poznavanju fitocenoza sa srpskom Ramondijom (*Ramonda serbica* Panč.) u klisurama severnih ogranaka Šarplanine. *Ekologija* (Belgrade) 16: 1-34.
- MEYER F.K. 1970. Gesneriaceae als Glieder der Flora des Tertiär in Europa. *Wiss. Z. Friedrich-Schiller-Univ. Jena, Math.-Naturwiss. Reihe* 19: 401-411.
- PANČIĆ J. 1856. Verzeichniss der in Serbien wildwachsenden Phanerogamen, nebst den Diagnosen einiger neuer Arten. *Verh. zool. bot. Ver. Wien* 6: 475-598.
- PANČIĆ J. 1874. *Flora Kneževine Srbije ili vaskularne biljke, koje u Srbiji divlje rastu. Flora Principatus Serbiae*. Državna štamparija, Beograd.
- RICHARD L.C.M. 1805. *Ramonda*. In: C.H. Persoon (ed.), *Synopsis Plantarum* 1: 216-217. C.F. Cramarum, Paris.
- STEVANOVIĆ B. 1986. Ecophysiological characteristics of the species *Ramonda serbica* Panč. and *Ramonda nathaliae* Panč. et Petrov. *Ekologija* (Belgrade) 21: 119-134.
- STEVANOVIĆ V., BULIĆ Z. 1992. Novi podaci o horologiji i fitocenologiji vrste *Ramonda serbica* Panč. (Gesneriaceae) u Crnoj Gori. *Glasn. Republ. Zav. Zašt. Prir. – Prirod. Muz. Podgorica* 25: 7-16.
- STEVANOVIĆ V., STEVANOVIĆ B. 1985. *Asplenio cuneifoliii-Ramondaetum nathaliae* – new chasmophytic community on serpentine rocks in Macedonia. *Bull. Nat. Hist. Mus., Belgrade, ser. B* 40: 75-87.
- STEVANOVIĆ V., NIKETIĆ M., STEVANOVIĆ B. 1986a. On distribution of endemic and relic species *Ramonda serbica* Panč. (Gesneriaceae) in S.R. Macedonia (Yugoslavia). *Bull. Mus. Hist. Nat. Belgrade, ser. B* 41: 17-25.
- STEVANOVIĆ V., NIKETIĆ M., STEVANOVIĆ B. 1986b. Sympatric area of the sibling and endemo-relict species *Ramonda serbica* Panč. and *R. nathaliae* Panč. et Petrov. (Gesneriaceae) in Southeast Serbia (Yugoslavia). *Bull. Inst. Jard. Bot. Univ., Belgrade* 20: 45-54.
- STEVANOVIĆ V., NIKETIĆ M., STEVANOVIĆ B. 1987. Phytocoenological characteristics of sympatric habitats of endemo-relict species *Ramonda serbica* Panč. and *R. nathaliae* Panč. et Petrov. *Bull. Inst. Jard. Bot. Univ. Belgrade* 21: 17-26.
- STEVANOVIĆ V., NIKETIĆ M., STEVANOVIĆ B. 1991. Chorological differentiation of endemo-relic species *Ramonda serbica* Panč. and *R. nathaliae* Panč. & Petrov. (Gesneriaceae) on the Balkan Peninsula. *Bot. Chron.* 10: 507-515.
- STRID A. 1991. *Gesneriaceae*. In: A. Strid, K. Tan (eds), *Mountain flora of Greece* 2: 259-263. Edinburgh Univ. Press, Edinburgh.
- SZELAĜ Z., SOMLYAY L. 2009. History of discovery and typification of *Haberlea rhodopensis* Friv. (Gesneriaceae). *Ann. Bot. Fennici* 46: 555-558.